

Climate Impacts and You



Joyce Yee & Rofannie Chan | Airport Advisory Committee Meeting | March 28, 2023

Background

SJCOG Regional Needs Assessment in 2021: learn more about climate impacts

The Regional Climate Collaborative (RCC) is a 3-year project sponsored by SJCOG to:

- Increase awareness of climate impacts in San Joaquin county
- Build social networks and seek funding to implement climate solutions



Campaign Goals

1. **Learn** what you know about climate impacts and local emergency resources.
2. **Increase** what you know about those impacts and resources



Target Stakeholders & Audiences

- Transit/transportation system representatives
- Civic organization representatives
- Groups most vulnerable to climate impacts:
 - *children*
 - *elders*
 - *low-income*
 - *people with disabilities*

Strategies & Targets

- Online surveys: 500 responses



- Tabling in person at local events



- Workshops (online and pre-recorded, but open to in-person) - by request



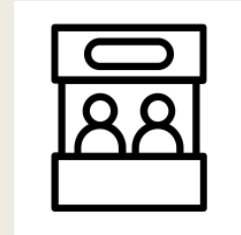
Project Timeline

Three Phases

1. *Pre-outreach: November 2022 – January*



2. *Outreach: February – June 2023*



3. *Post-outreach: July 2023*

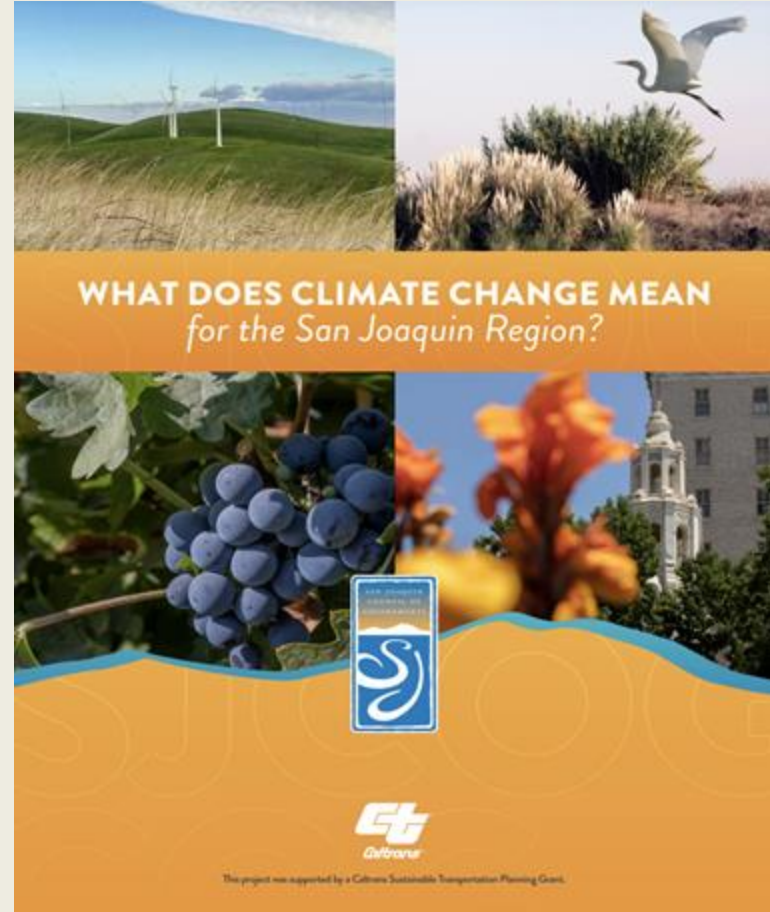


Resource for the Campaign

Public Booklet available on the SJCOG website at [Climate Change Booklet](#)

(also translated into Spanish)

Contains general information on climate change, possible hazards and their impacts on the transportation system



Climate Impacts on Transportation

Hazard	Impacts
Extreme Heat	Damaged Infrastructure: Warping Railways
Water Shortages	Agriculture, Loss in Time and Resources
Wildfire	Infrastructure Damage and Movement Impact
Flooding	Infrastructure Damage and Movement Impact
Air Quality	Health Outcomes and Movement Impacts

Changing Precipitation

TRANSPORTATION SYSTEM COMPONENT	IMPACT
ROADS	Shrinking of ground below asphalt can cause pavement to crack
RAIL	Runoff, leaching, slope instability, load bearing capacity, track stability and visibility
BUSES	Delays and route changes, flooded bus stops
AIRPORTS	Stress on water supply for cooling energy powers, irrigation, pavement power washing
PORT OF STOCKTON	Challenges accessing fixed docks with water level fluctuation
TRAVELER SAFETY	Delays, dangerous conditions for travel from flood waters and debris
WORKER SAFETY	Dangerous work conditions, changes to work schedule

Our Requests



- Distribute surveys to your membership
- Upcoming community events
- Conduct a workshop



Please contact

Joyce Yee, yee@sjcog.org

Rofannie Chan, chan@sjcog.org



Thank you!

Questions/Comments?

